

# TRUEOPTICS™ Mirror



Fogged up mirrors make intraoral photography time consuming and frustrating.

The TRUEOPTICS™ handle continuously blows a light steady flow of air across the mirror, eliminating the production of fog and the built in LED lights create fast, easy brilliant optics.

Picture quality is directly dependent on the quality of the dental mirror. To achieve high quality dental photos good enough for research, teaching, marketing or presentation of cases, the mirror should reflect with exceptional exposure optics.

Built-in ventilation for a fog-free mirror

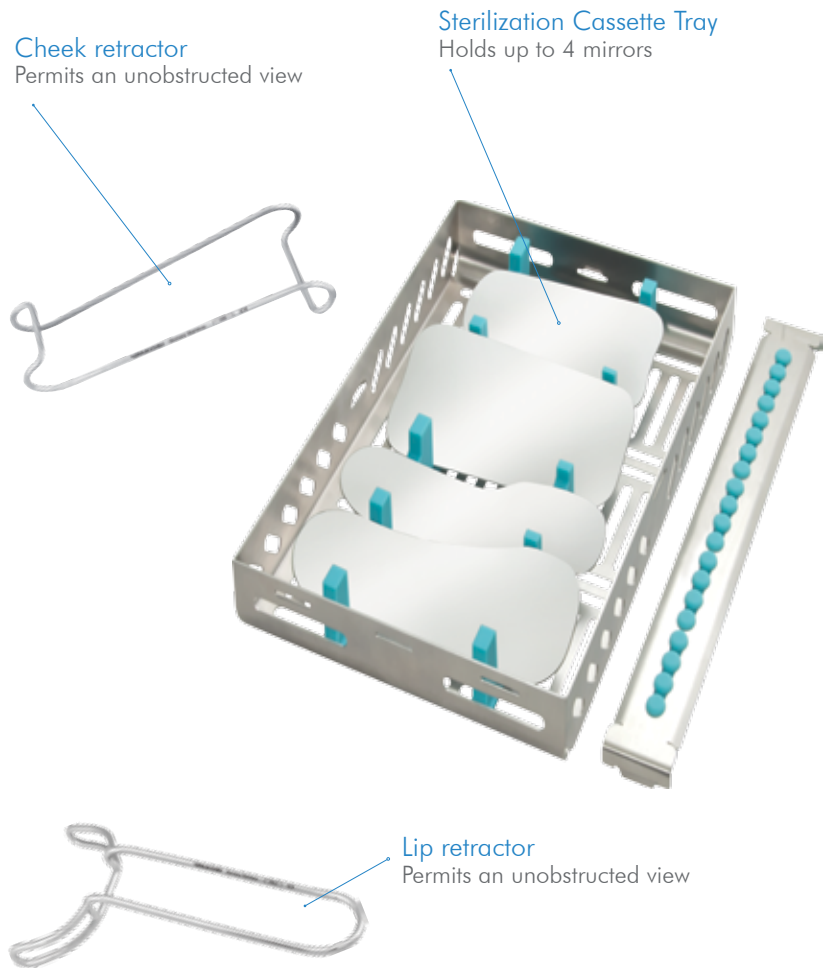
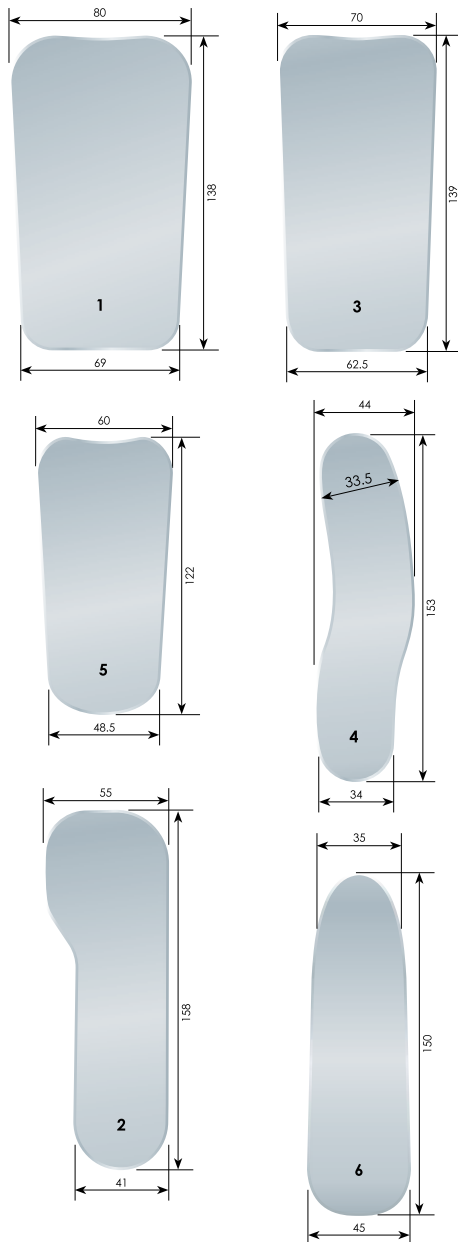
Brilliant, high-quality image reproduction

Rhodium free - significantly improves resistance to scratches

LED for clean bright visibility and easy camera focusing

Ideal long fluted handle provides optimal positioning and handling and supplied with custom made disposable plastic bags for optimal hygiene

Mirror cassette provided for convenient sterilization and storage



Item #	Description
CRC	Cheek retractor Columbia CRC, ca. 135mm, distances 30mm & 42mm, stainless steel
CRLA	Lip retractor CRLA, ca. 160mm, for upper + lower jaws, stainless steel
FSFDM01	Intraoral Photo Mirror 01, Occlusal, Front Surface, for adults, Material: stainless steel
FSFDM02	Intraoral Photo Mirror 02, lateral, Front Surface, for adults, Material: stainless steel
FSFDM03	Intraoral Photo Mirror 03, Occlusal, Front Surface, for adults, Material: stainless steel
FSFDM04	Intraoral Photo Mirror 04, lateral, Front Surface, for adults, Material: stainless steel
FSFDM05	Intraoral Photo Mirror 05, occlusal, Front Surface, for children, Material: stainless steel
FSFDM06	Intraoral Photo Mirror 06, lateral, Front Surface, universal, Material: stainless steel
FSFK43	Photo mirror tray FSFK43 for 4 mirrors, stainless steel, 290x187x35mm, incl. Silicon rails & clothing crossbar
FSFK02	Storage case for photo equipment (empty), 360x300x105mm, anodized aluminium, incl. customized foam parts, lockable
FSG2	Photo Mirror handle FSG 2, 155mm, anod. Aluminium, inclination angle 0-45° universal, for mirror gauge 1.5 - 3.0mm

Further combinations are available on request!

# REFLEX COMMUNICATOR™

“Visible dangers frightens us less than the imaginary” William Shakespeare...



- Increase patient understanding
- Increase patient cooperation
- Decrease patient fear



This proven simple solution to the age old problem of communicating effectively with patients.

The Reflex Communicator™ is an inconspicuous mirror attached securely to the operating light, allowing the patient to view his or her mouth directly, and observe what is happening. An excellent tool for easing fear and tension, and freeing the orthodontist to concentrate on intricate procedures.

The light and mirror are positioned onto the mouth and encourages patients to stay still as this is the only position to watch. No necessity to reposition the lamp.



#### Ideal for:

The Reflex Communicator™ is a particularly useful accessory during intra-oral procedures involving orthodontics, oral hygiene instruction and also during consultation when description and advice is needed.

For those not interested in seeing what is happening in their mouth the orthodontist can easily deflect the mirror by simply pressing the colored buttons.



#### Reflex Communicator order info

Item	Article Description
RFLX	REFELEX Communicator, 90 mm
RFLX-7000	REFELEX Communicator, 70 mm
RFLX-90SIRO	REFELEX Communicator, 90 mm complete w/adaptor for Siroux-Lamp
RFLX-70SIRO	REFELEX Communicator, 70 mm complete with Adapter for Sirolux - lamp

The Reflex Communicator™ can be attached in the center of most lamps at the solid center.